

PERFORMANCE

500

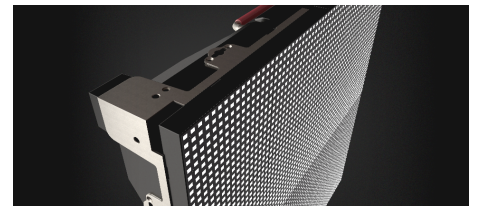
The versatile flat display designed to light up the outside world.

- Outdoor
- 3.1-10mm Pixel Pitch
- Rapid Deployment
- Multiple Formats
- High Brightness
- SMD LED



Energize your environment with outstanding outdoor canvases with uncompromised flexibility and durability. The Performance Series™ display from Nanolumens is built to be astonishingly bright and robust, and outperform substitute models in quality and reliability at a surprisingly accessible price point. Displays in this series range in pixel pitch from 3.1mm to 10mm and can be designed to meet any size or shape.

Designed and tested to exceed IP65, Performance Series™ products stand up to all types of outdoor conditions without the need for internal environmental controls. Backed by our industry-leading six-year warranty, Performance Series™ displays give you the power and performance to transform any outdoor space!



Why Nanolumens

At Nanolumens, we've set our sights — and our standards — high when it comes to LED and service. We leverage the best of technology to meet everyday needs and enable digital transformation. Our promise to you is an unsurpassed first and lasting experience.

NIXEL™ to Pixel Warranty

Your display is engineered to pass the ultimate test: time. We use high-performing materials like gold wiring to ensure your display is a worthwhile investment. Our Warranty coverage starts pixel one ensuring your display is covered 100% from our Atlanta headquarters.

Benefits

Multiple Formats

Maximize design flexibility with both cabinet and frame-and-skin topologies

Environment Agnostic

Create displays in any environment with confidence knowing each cabinet is fully IP65 Rated

High Quality Componentry

Performance series displays are built with high quality components which carry an industry leading 3 year extendable warranty. No small letters, no addendums.

Long-Term Dependability

Our outdoor displays are engineered to withstand extreme weather conditions, ensuring your display lasts and exceeds expectations.

SPECIFICATIONS: PERFORMANCE 500

Pixel Pitch	3.1 mm	3.9 mm	5.9 mm	8.3 mm	10.4 mm
Module Size (W X H) ^[1]	500 x 500 mm / 19.69 x 19.69 in				
Module array per "Full HD"	12 x 7 ²	15 x 8 ²	23 x 13 ²	32 x 18	40 x 22 ²
Module Resolution	160 x 160	128 x 128	84 x 84	60 x 60	48 x 48
Module Depth	3.75 in / 95.25 mm				
Watts/ft ²	61.34 Max / 18.40 Avg				
Weight/ft ²	7.65 lbs / 3.47 kg (includes cabinet)				
Max Brightness (standard)	6000 nits	5500 nits			
Viewing Angle Max	178° horizontal / 140° vertical				
Viewing Angle L50 ^[2]	140° horizontal / 140° vertical				
Curvable	No				
Serviceability	Front				
Indoor/Outdoor	Outdoor				
Input Voltage (VAC)	110 / 120 / 208 / 220 / 240 VAC - Single Phase				
Output Bit Depth ^[3]	8-bit Standard (16.7 Million) / Up to 10-bit (>1 Billion)				
Lifetime	>100,000 hours				
AWARE™	Enabled Upon Request				
Operating Temperature	Operating: -10 to 50C				

1 Cabinet/module footprint, standard décor/frame adds 1/2" to overall system height and width

2 L50 is objective measured angle at which brightness decreases to 50% of max brightness

3 Performance Series™ LED displays process at up to 14 bits per channel internally. Output Bit Depth is limited by the input bit depth and system design throughout.

