



# ENGAGE NXT

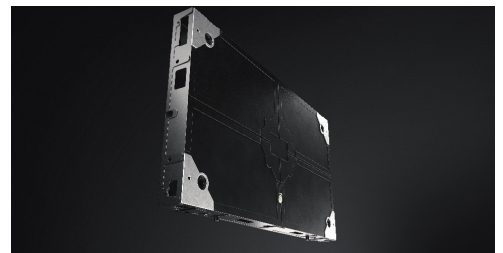
Value without sacrifice

---

- 16:9 Format
- TAA Compliant
- 1.25-2.5mm Pixel Pitch
- No Mount Needed
- 100K Lifetime
- Front or Rear Serviceable

Engage NXT is the epitome of value without sacrifice. Built on the same platform and processing as our renowned Engage Series, this cabinet based solution delivers mount-less integration, high performance visuals, and simplistic serviceability.

Engage NXT is available in 16:9 format cabinets with pitches ranging from 1.25 - 2.5mm, is TAA compliant and backed by our Nixel to Pixel Warranty



## Why Nanolumens

At Nanolumens, we've set our sights — and our standards — high when it comes to LED and service. We leverage the best of technology to meet everyday needs and enable digital transformation. Our promise to you is an unsurpassed first and lasting experience.

## NIXEL™ to Pixel Warranty

Your display is engineered to pass the ultimate test: time. We use high-performing materials like gold wiring to ensure your display is a worthwhile investment. Our Warranty coverage starts pixel one ensuring your display is covered 100% from our Atlanta headquarters.

---

## Benefits

### Legendary Quality

Value doesn't have to mean low quality. Our Engage NXT displays are built with Nanolumens performance and quality.

### Cable-less Interconnects

Engage NXT LED modules are cable-less making replacement as easy as a snap in and out, saving in time and money.

### 16:9 Format

Take the complexity out of content creation and video wall design with our simple 16:9 format cabinets.

### No Mounts Required

Nanolumens' Engage NXT displays do not require a third party mount, taking the cost and complexity out of the installation.

SPECIFICATIONS: ENGAGE SERIES

Pixel Pitch	1.2mm	1.5mm	1.8mm	2.5mm
Module Size (W X H) <sup>1</sup>	600 x 337.5 mm 23.62 x 13.29 in			
Module array per "Full HD"	4 x 4	5 x 5	6 x 6	8 x 8
Module Resolution	480 x 270	384 x 216	320 x 180	240 x 135
Module Depth <sup>2</sup>	50 mm / 1.97 in			
Watts/ft <sup>2</sup>	55.78 Max / 16.73 Avg	46.47 Max / 13.94 Avg	51.12 Max / 15.34 Avg	55.78 Max / 16.73 Avg
Weight/ft <sup>2</sup>	5.2 lbs / 2.34 kg			
Max Brightness (standard)	600nits	700nits	800nits	1000nits
Viewing Angle Max	178° horizontal / 178° vertical			
Viewing Angle L50 <sup>3</sup>	170° horizontal / 170° vertical		160° horizontal / 160° vertical	
Curvable	No			
Serviceability	Front			
Indoor/Outdoor	Indoor			
Input Voltage (VAC)	110 / 120 / 208 / 220 / 240 VAC - Single Phase			
Output Bit Depth <sup>4</sup>	8-bit Standard (16.7 Million) / Up to 10-bit (>1 Billion)			
Lifetime	>100,000 hours			
Warranty	2 year Standard / 3 year extended			

1 Cabinet/module footprint, standard décor/frame adds 1/2" to overall system height and width  
 2 Cabinet/module depth, standard décor/frame depth adds 1/8" to overall system depth  
 3 L50 is objective measured angle at which brightness decreases to 50% of max brightness.  
 4 Engage Series LED displays process at up to 14 bits per channel internally. Final output bit depth is limited by content source capabilities.  
 \*Power is estimated

