



# ENGAGE PRO

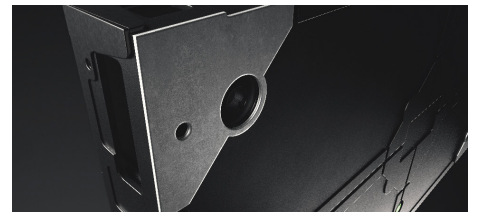
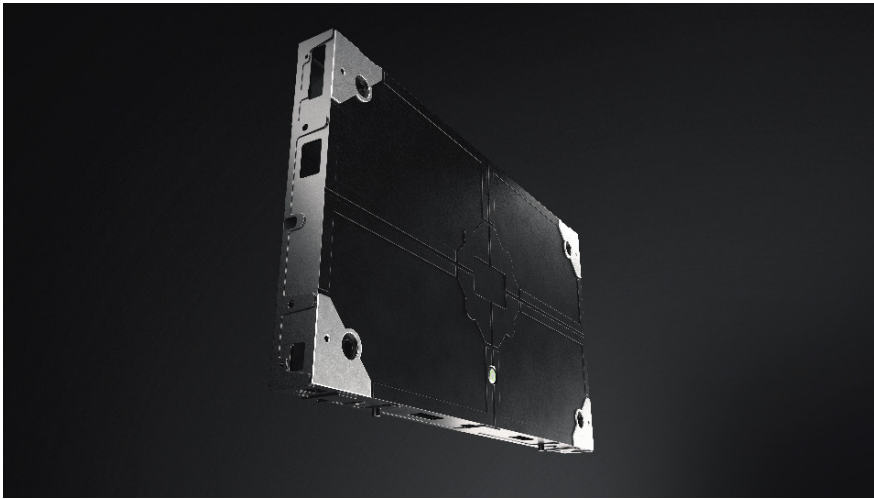
Next-Era Performance

---

- 0.7 - 1.25 mm
- TAA Compliant
- Ultra-High Contrast
- 16.9 Format
- COB Mini LED
- 100K Lifetime

Engage Pro is our newest cabinet based display innovation. Built on the same platform and processing as our renowned Engage Series, this solution delivers mount-less integration, high performance visuals, and simplistic serviceability.

Engage Pro is available in 16:9 format cabinets with pitches ranging from 0.7 - 1.25 mm, is TAA compliant and backed by our Nixel to Pixel Warranty.



## Why Nanolumens

At Nanolumens, we've set our sights — and our standards — high when it comes to LED and service. We leverage the best of technology to meet everyday needs and enable digital transformation. Our promise to you is an unsurpassed first and lasting experience.

## NIXEL™ to Pixel Warranty

Our Warranty coverage starts with pixel one, ensuring your display is covered 100% from our Atlanta headquarters.

---

## Benefits

### Incredible Blacks

COB-MiniLED architecture delivers over 4x more contrast than traditional SMD LED

### Reject Reflections

The robust COB coating has been designed to minimize reflections enabling specification in brighter environments

### TAA Compliant

Engage Series displays are TAA Compliant making them the perfect solution for your secure environments

### Ultra-Fine Pitch

From super fine utility detail, to sharp visual detail, the Engage pro ultra-fine pitch displays ensure your data is super clear

# SPECIFICATIONS: ENGAGE PRO

Pixel Pitch	0.7 mm	0.9 mm	1.25 mm
Module Size (W x H) <sup>1</sup>	600.0 x 337.5 23.6 x 13.2 in		
Module Array Per "Full HD" <sup>2</sup>	3 x 3		
Module Resolution	768 x 432	640 x 360	480 x 270
Module Depth <sup>3</sup>	50 mm / 1.97 in		
Watts / Sq. Ft <sup>2</sup> (Calibrated)	42.29 Max / 12.69 Avg	44.98 Max / 13.50 Avg	41.36 x Max / 12.41 Avg
Weight / Sq. Ft <sup>2</sup>	2.39 kg / 5.2lbs		
Max Brightness (Calibrated) <sup>4</sup>	800 nits		
Viewing Angle Max <sup>5</sup>	178" Horizontal / 178" Vertical		
Viewing Angle L50 <sup>5</sup>	160" Horizontal / 160" Vertical		
Curvable	No		
Serviceability	Front		
Indoor / Outdoor	Indoor		
Input Voltage	110 / 120 / 208 / 240 / VAC - Single Phase		
Output Bit Depth <sup>6</sup>	8-bit Standard (16.7 Million) / Up to 10-bit (>1 Billion)		
Lifetime	>100,000 Hours		
Warranty	6 Years		

1 - Cabinet/module footprint, standard décor/frame adds 1/2" to overall system height and width

2 - This product does not array to exactly 1920x1080

3 - Cabinet/module depth, standard décor/frame adds 1/8" to overall system depth

4 - Max Brightness at calibrated value

5 - L50 is objective measured angle at which brightness decreases to 50% of max brightness

6 - Engage Series™ LED displays process at up to 14 bits per channel internally. Output Bit Depth is limited by the input bit depth and system design throughput.

**NOTE:** Brightness and consumption values are measured at the calibrated specification.

Actual display wiring will reflect full max consumption.

